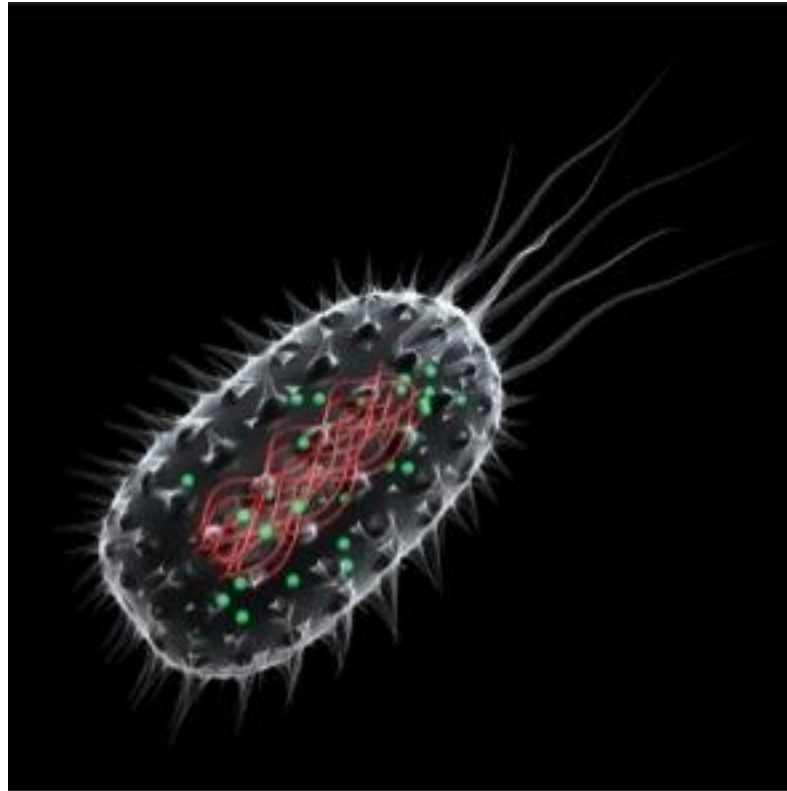


Prokaryotic and Eukaryotic Cells

Picture Vocabulary

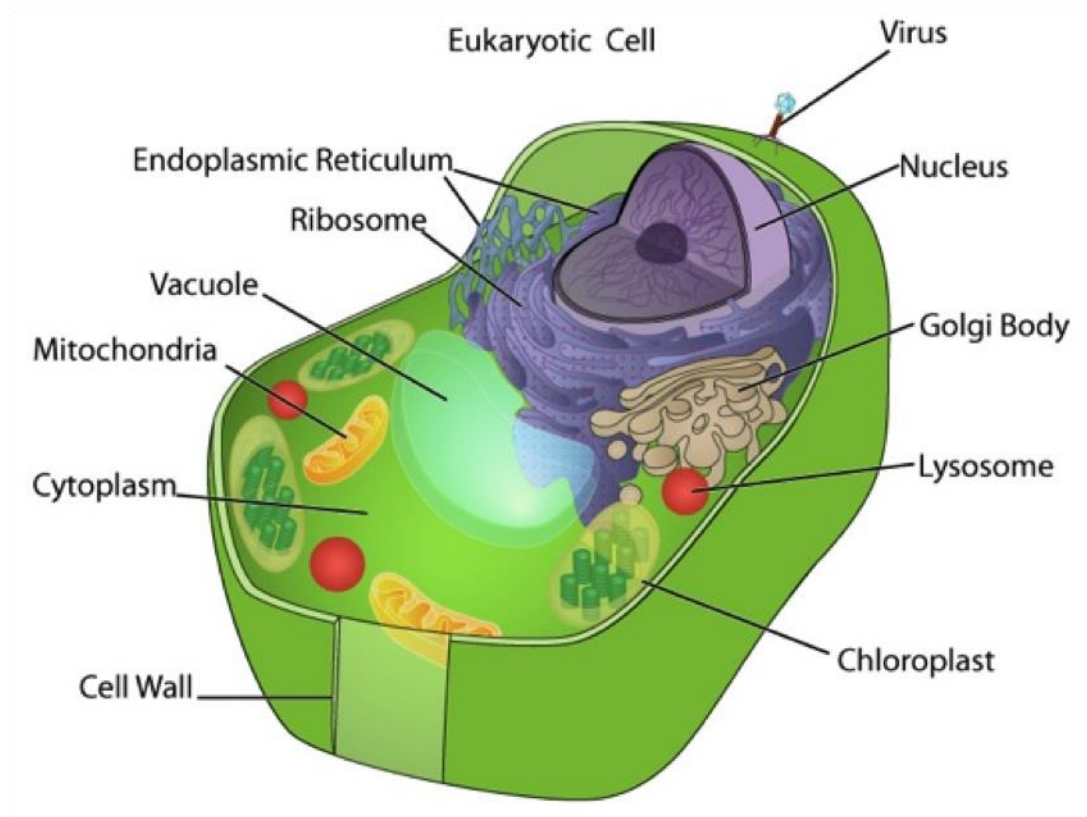
Biology

Prokaryote



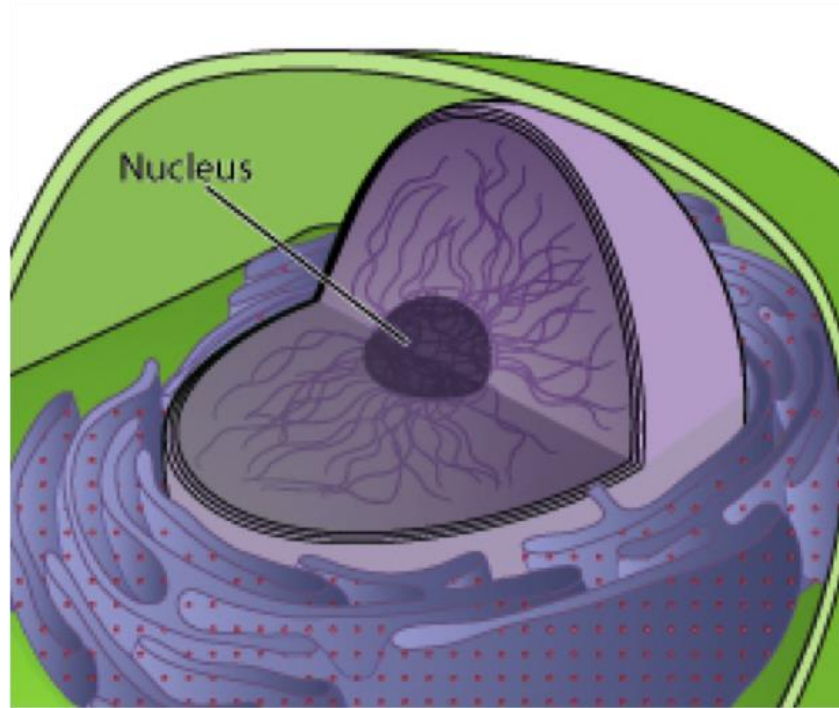
Organism that lacks a true nucleus and membrane-bound organelles.

Eukaryote



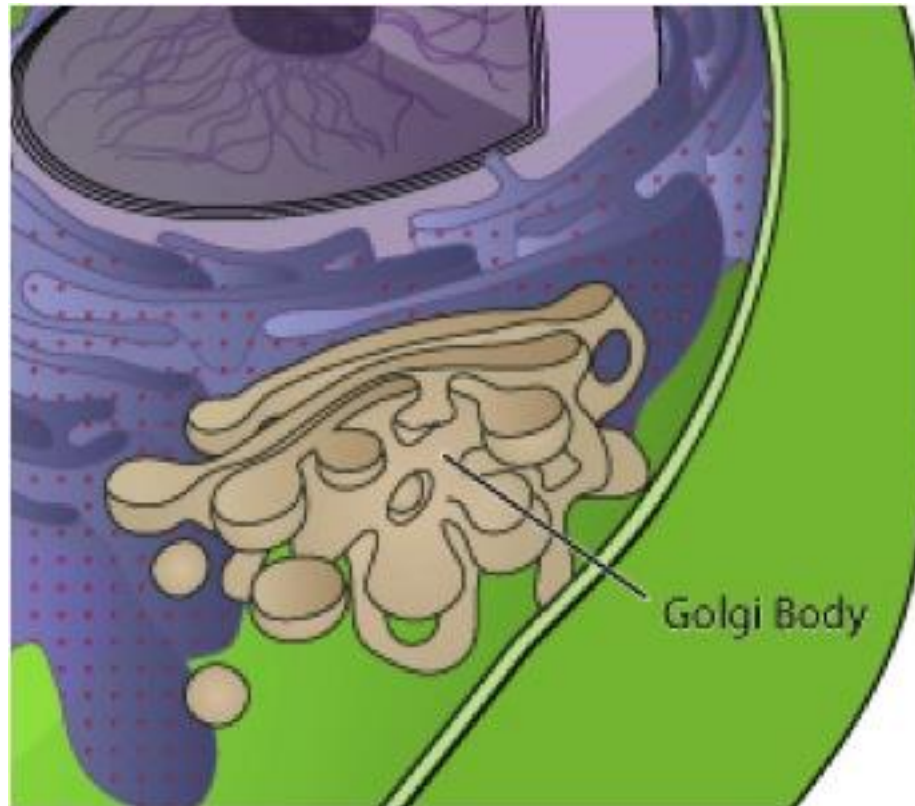
Organism that contains a true nucleus and membrane-bound organelles.

Nucleus



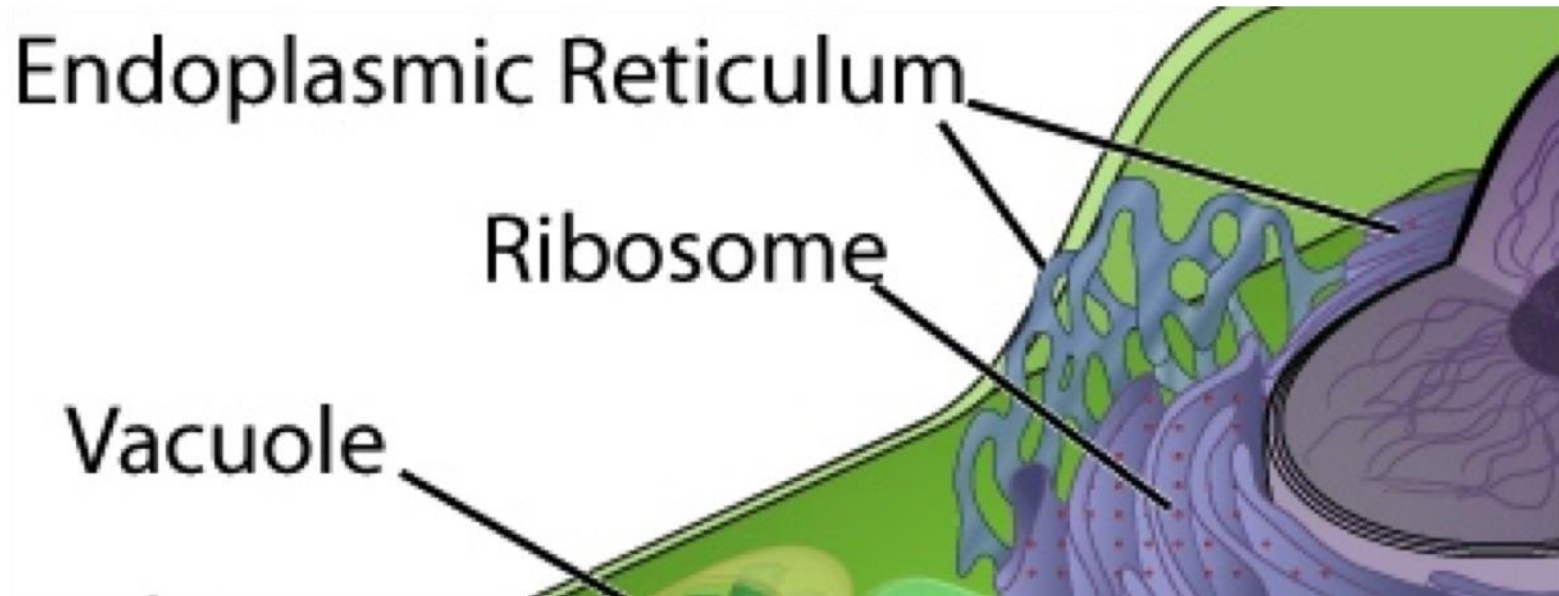
Organelle where a eukaryotic organism's genetic material is located; the control center of the cell.

Golgi Body



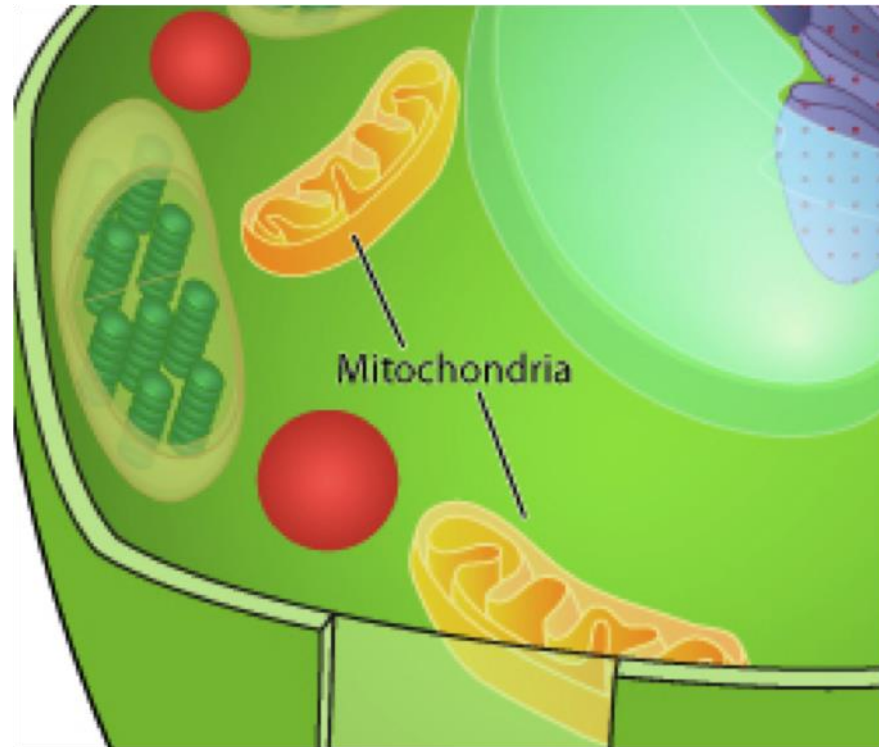
Organelle that packages and sorts materials for transport outside of the cell.

Ribosome



A structure made of RNA that converts messenger RNA sequences into amino acid sequences with the help of transfer RNAs.

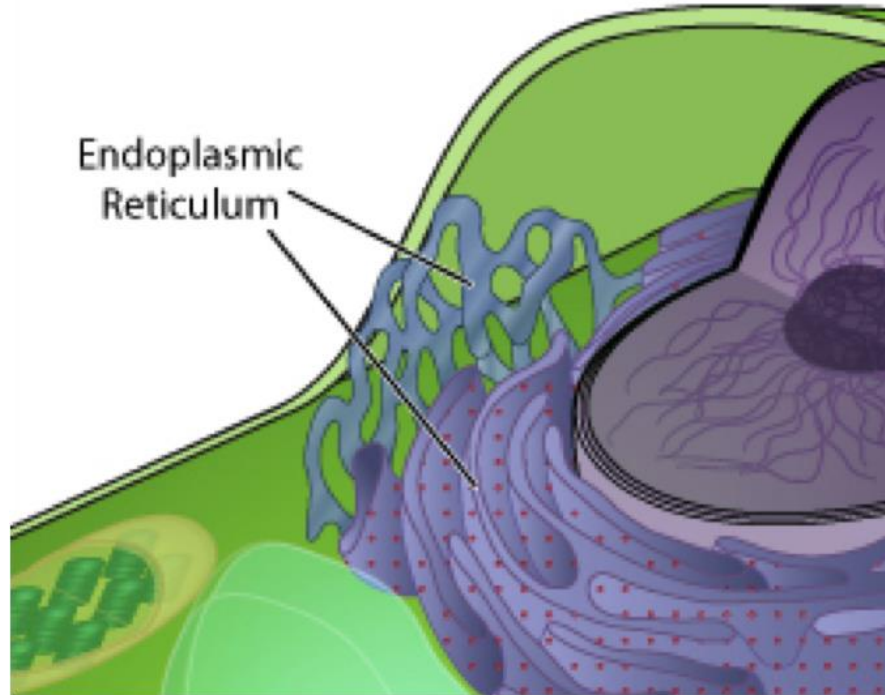
Mitochondrion (mitochondria)



The organelle where cellular respiration takes place in eukaryotic cells.

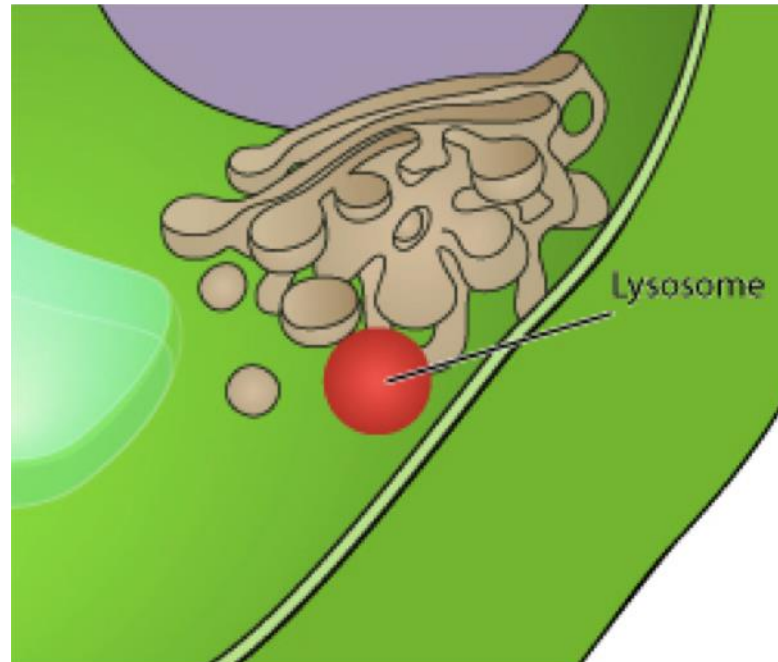


Endoplasmic Reticulum



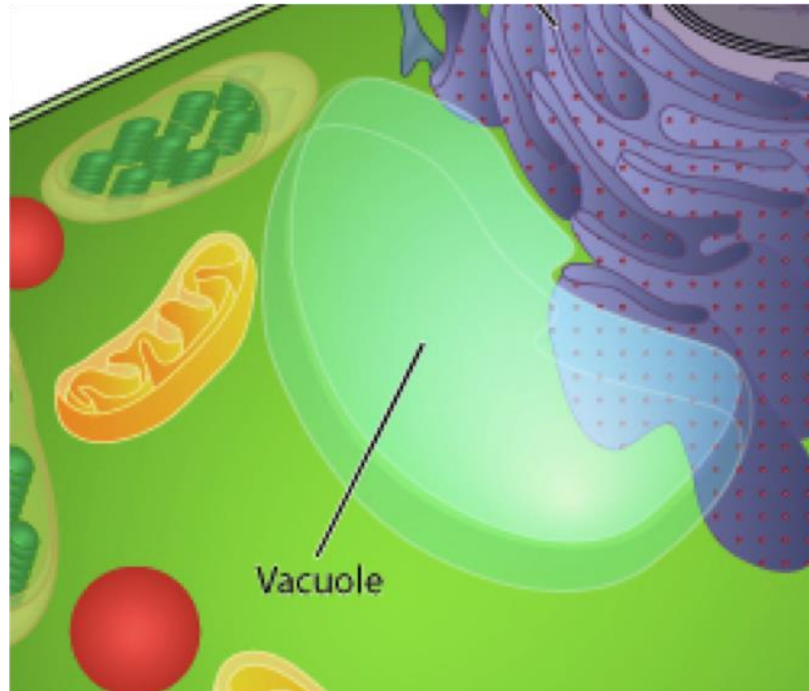
A system of membrane-enclosed sacs and tubes in the cytoplasm of eukaryotic cells where proteins and lipids are synthesized.

Lysosome



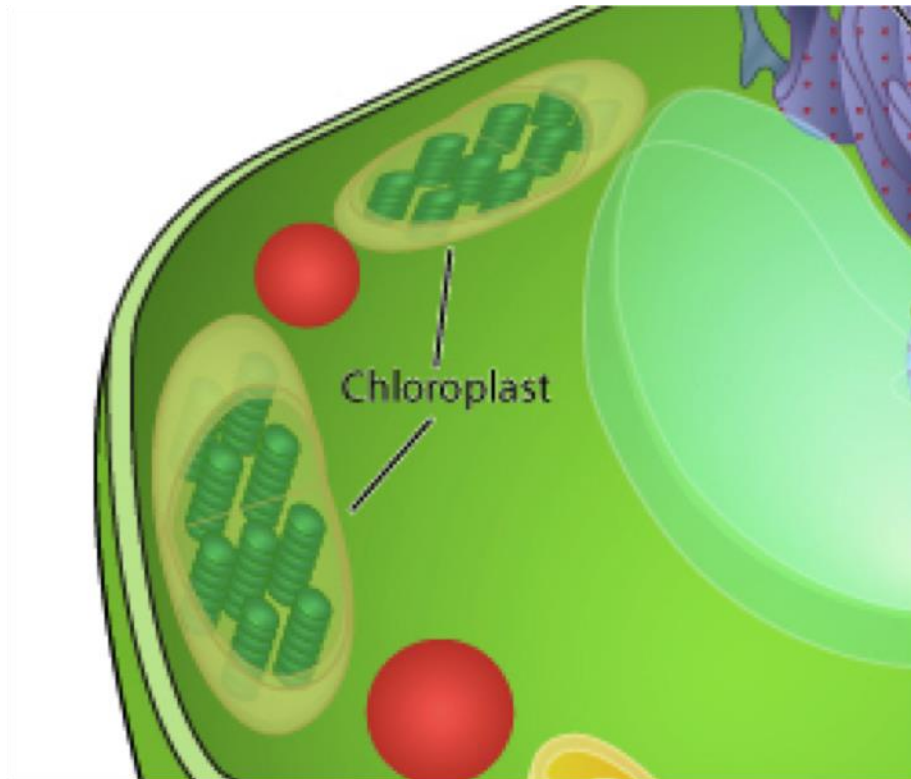
Organelle involved in the breakdown of foreign material and debris using digestive enzymes.

Vacuole



A large organelle in plant, fungal, and some animal, protist, and bacterial cells that stores water and materials inside the cell.

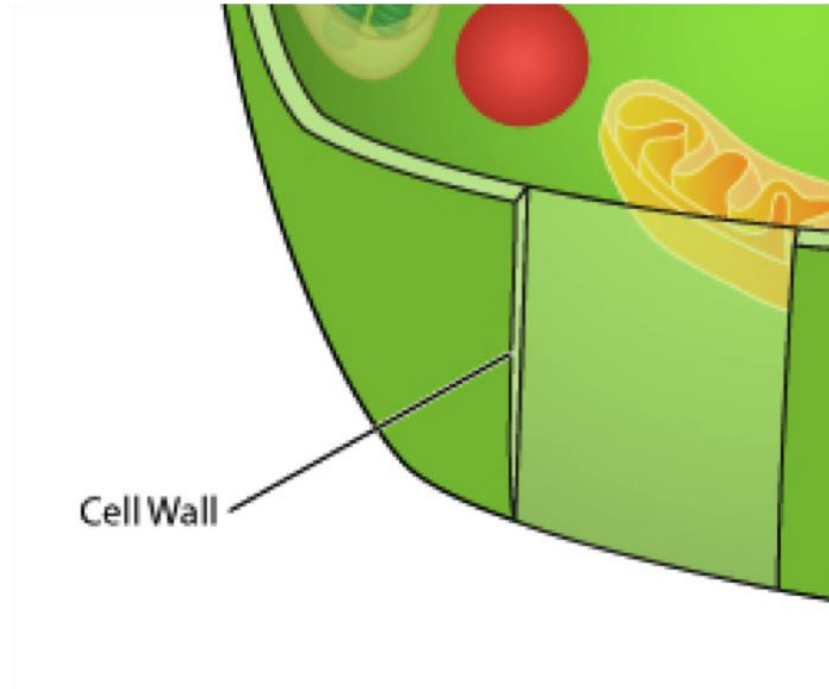
Chloroplast



The organelle where photosynthesis occurs in plant cells.

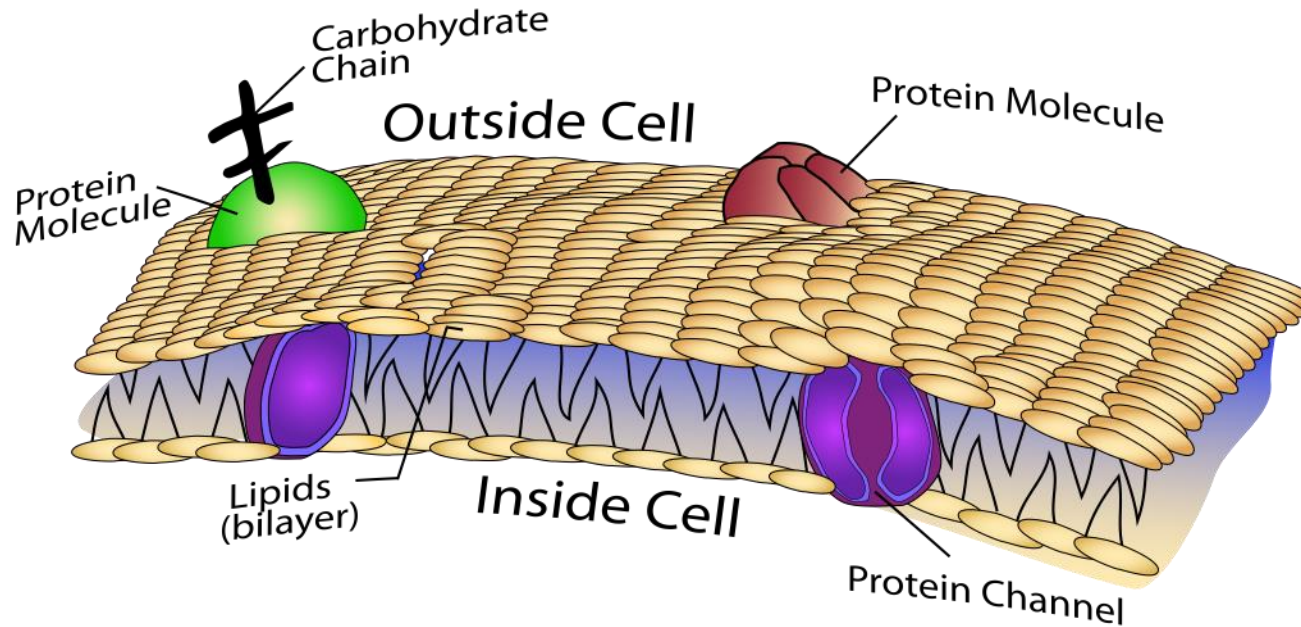


Cell Wall



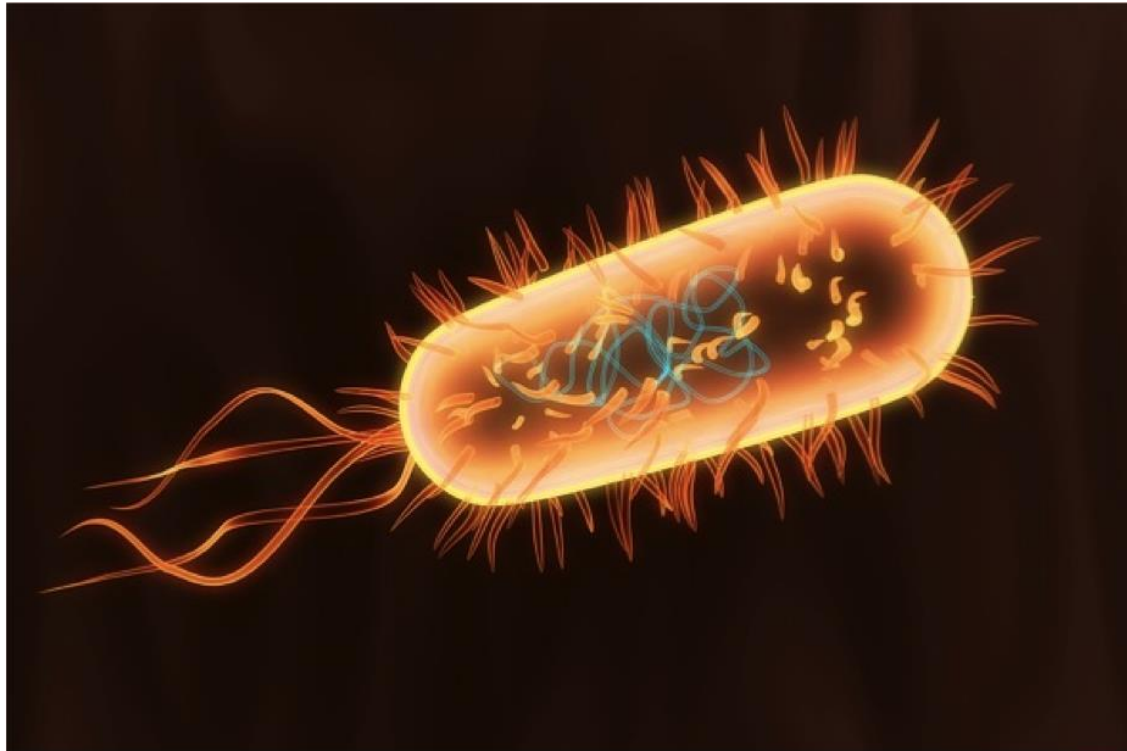
A tough layer that surrounds the cell membrane of some types of cells and provides protection and may also provide structural support.

Cell Membrane



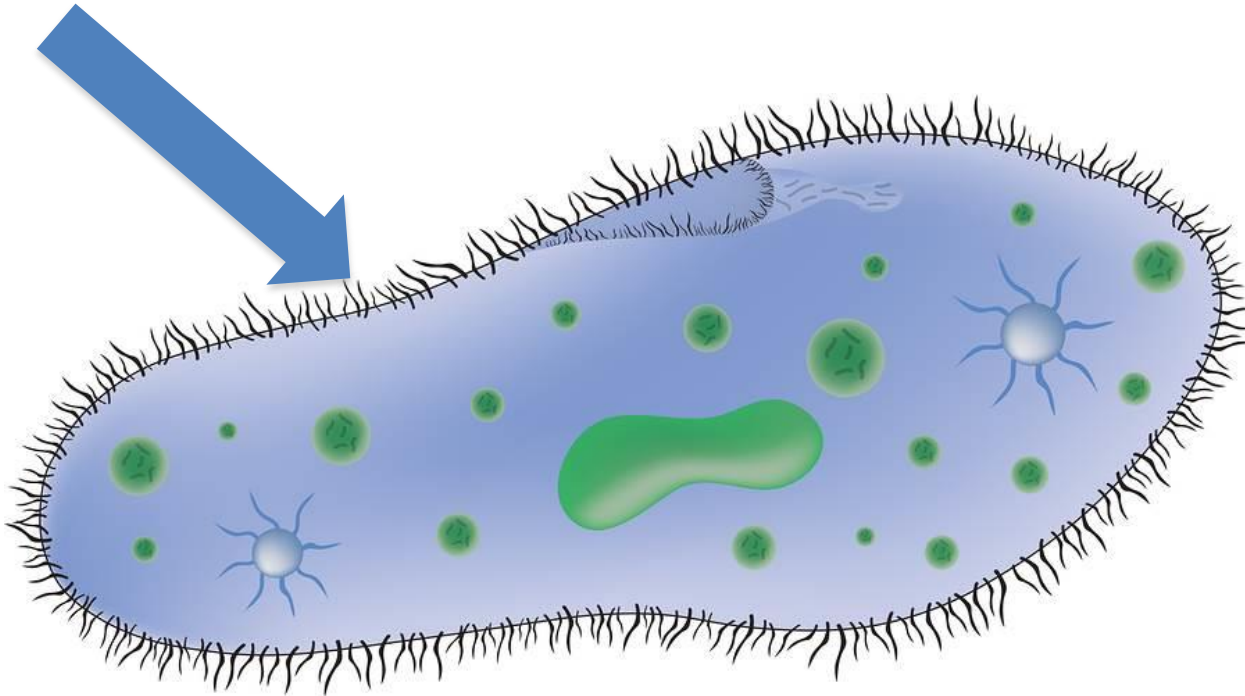
A lipid bilayer that surrounds the cytoplasm of a cell, separating the inside of the cell from the environment and controlling what enters and leaves the cell.

Bacterium (bacteria)



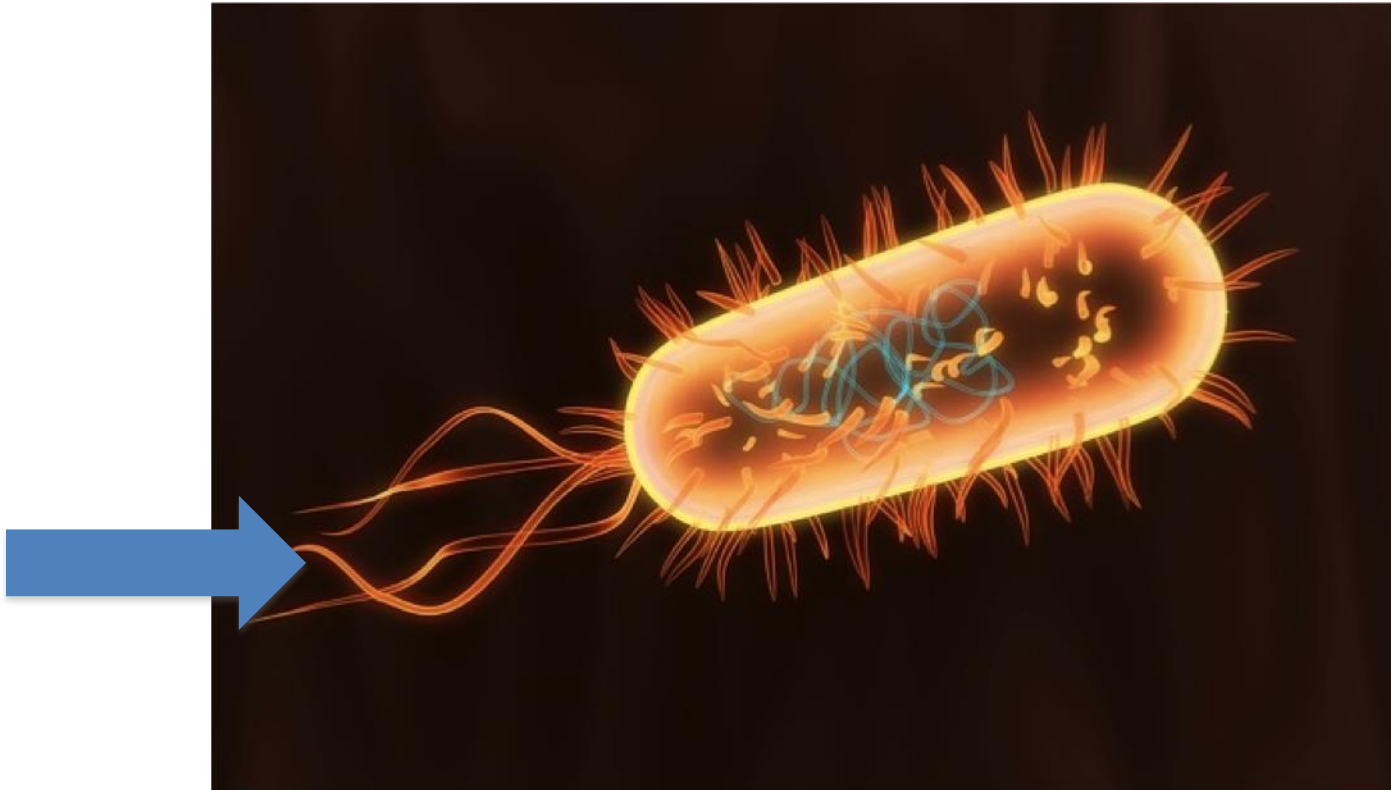
A prokaryotic organism that is a member of the domain Bacteria.

Cilia



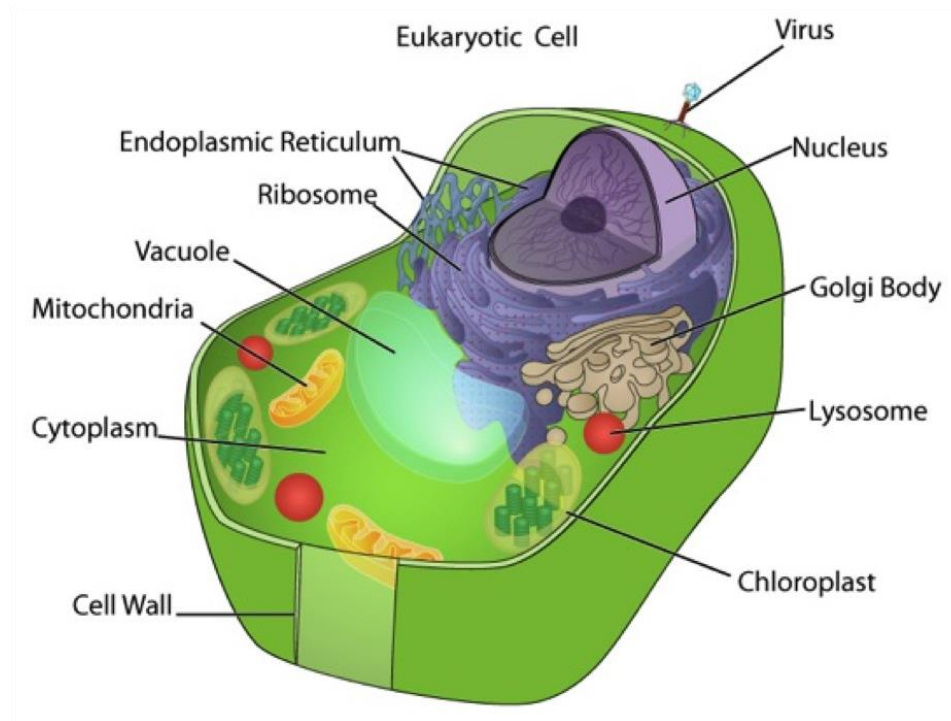
Small hair-like projections on the outside of a cell that are used to produce movement or to sense the environment.

Flagella



Long, thread-like organelle used for locomotion.

Organelle



A membrane-bound structure inside a eukaryotic cell that performs a specific function or set of functions.