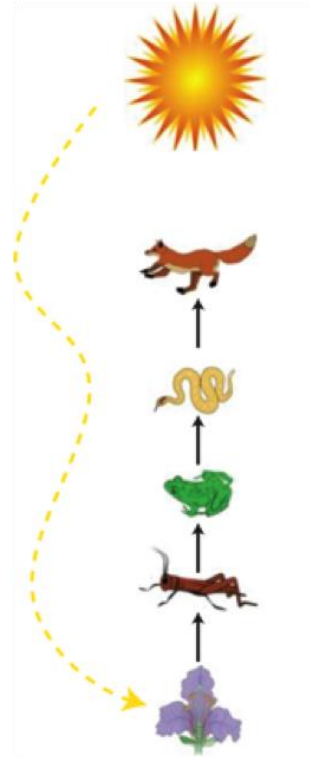


Environmental Interactions and Effects

Picture Vocabulary

Biology

Food Chain



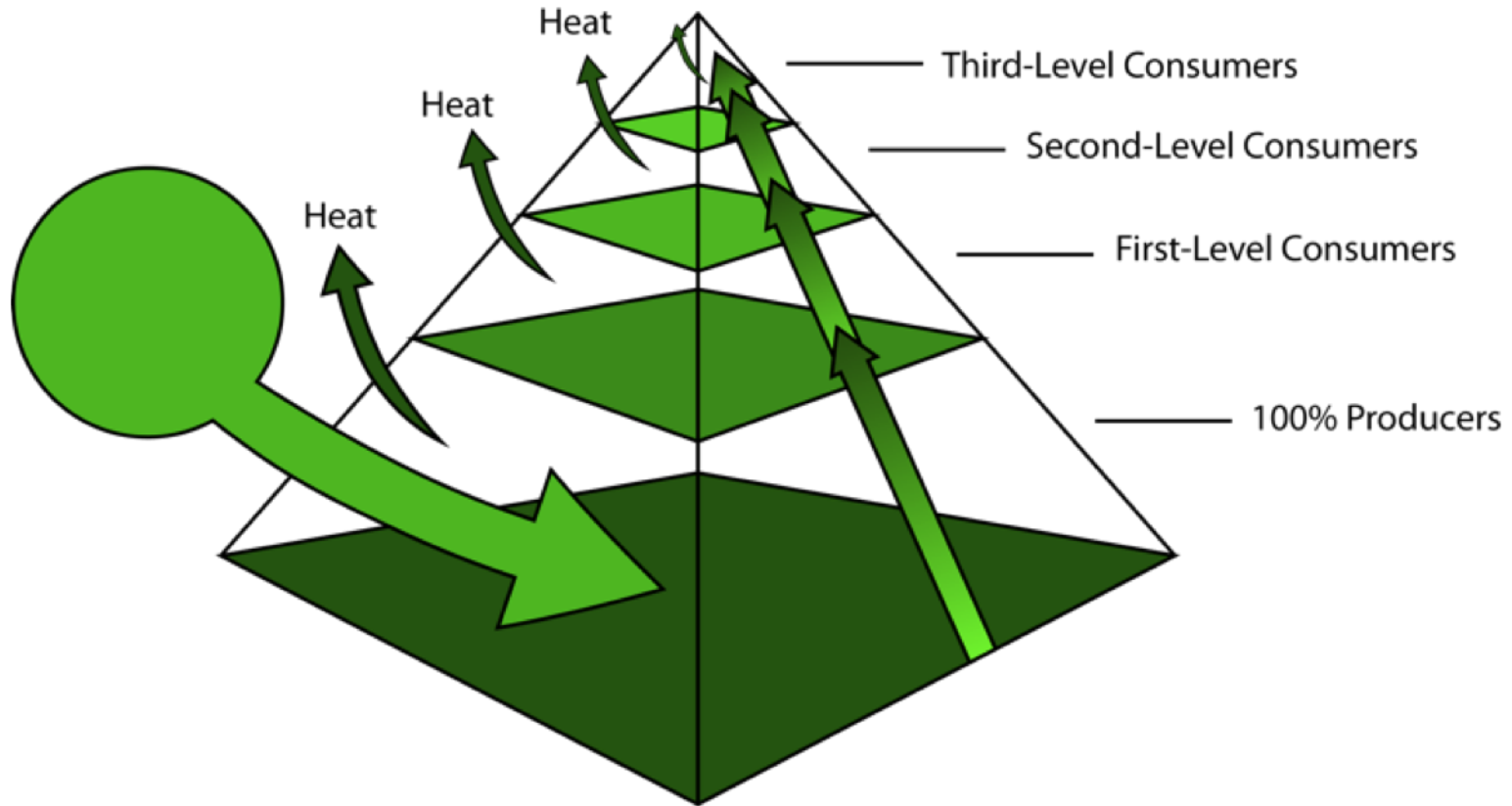
A single linear path of energy transfer through the trophic levels of an ecosystem.

Food Web



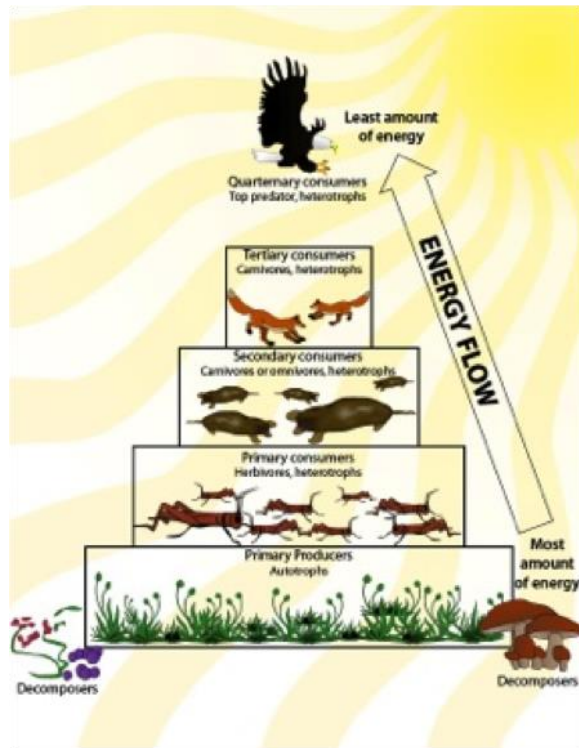
A complex of interconnected food chains showing the trophic interactions in an ecosystem.

Trophic Level



An organism's position on a food chain.

Ecological Pyramid



A representation of the organisms in an ecosystem organized into separate trophic levels with producers at the bottom and top predators at the top.

Tundra



A biome characterized by vast, treeless plains and extremely cold temperatures.

Taiga



A biome characterized by its coniferous evergreen forests and cold temperatures.

Desert



A biome characterized by very low annual rates of precipitation and sparse vegetation.

Rain Forest



A biome characterized by high biodiversity, humid climate, and high annual precipitation.

Grasslands



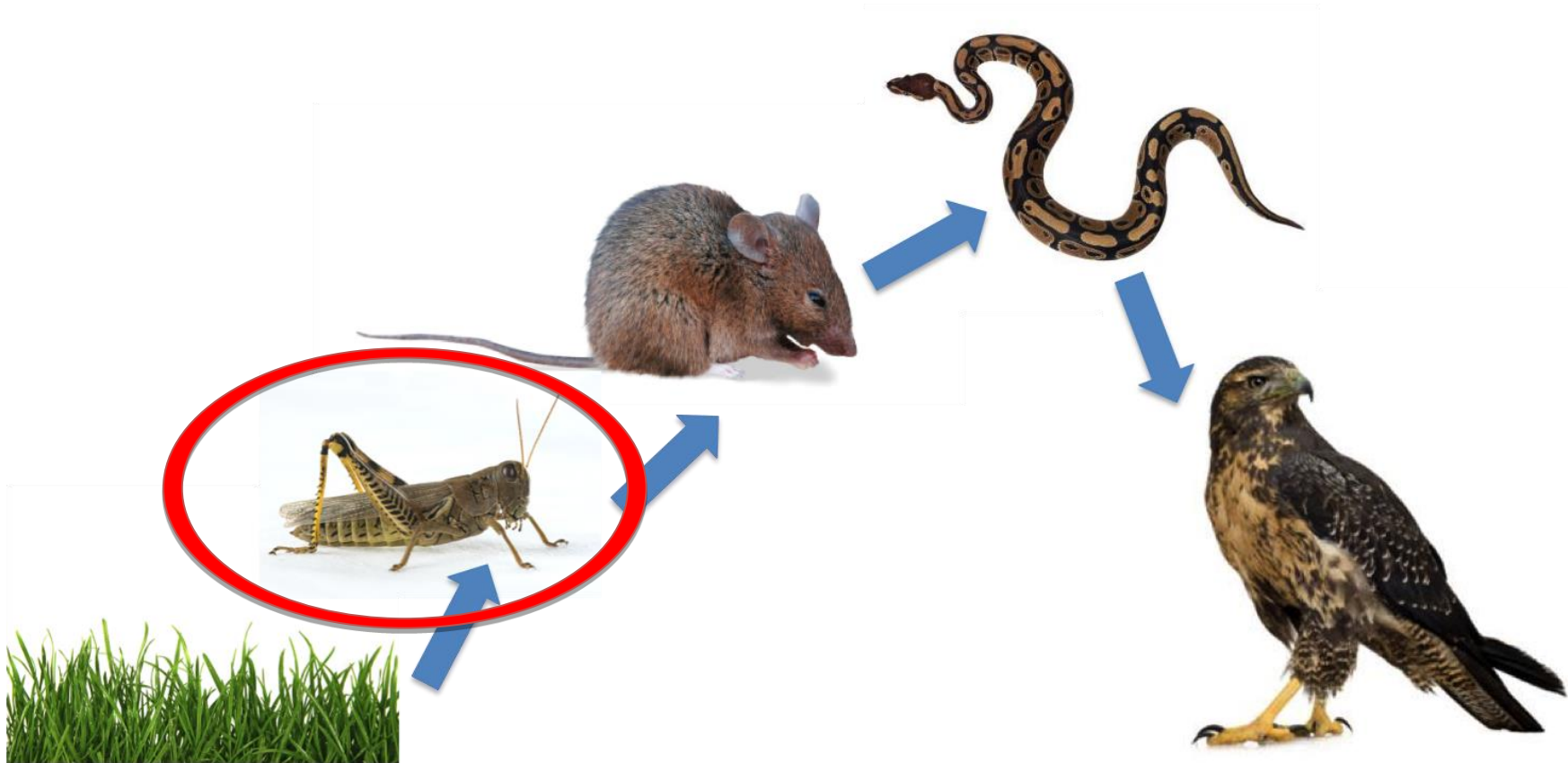
A biome characterized by a primary vegetation of grasses, warm-to-hot climates, and moderate rainfall.

Temperate Forest



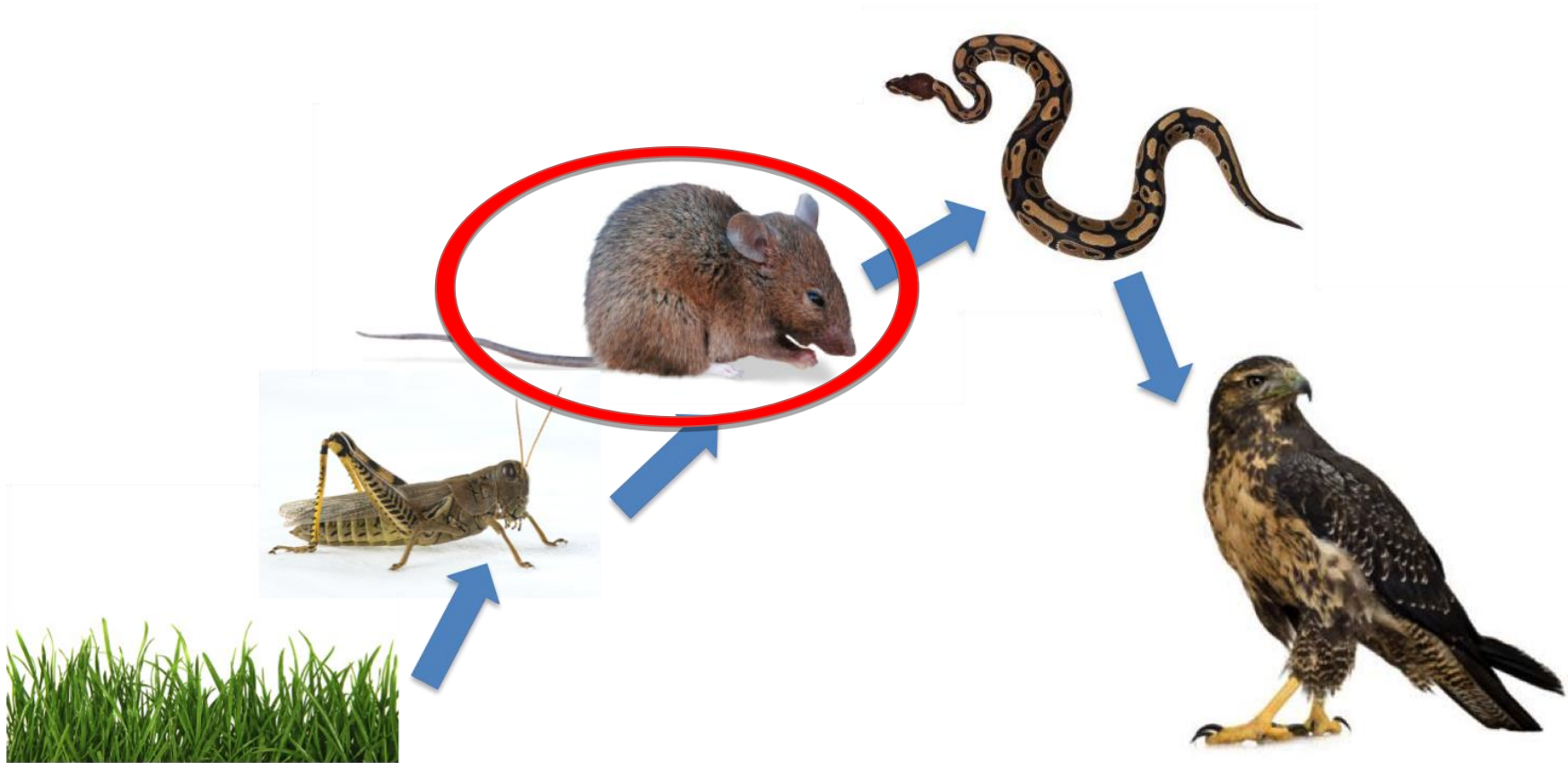
A biome characterized by high biodiversity, four distinct seasons, and moderate climate.

Primary Consumer



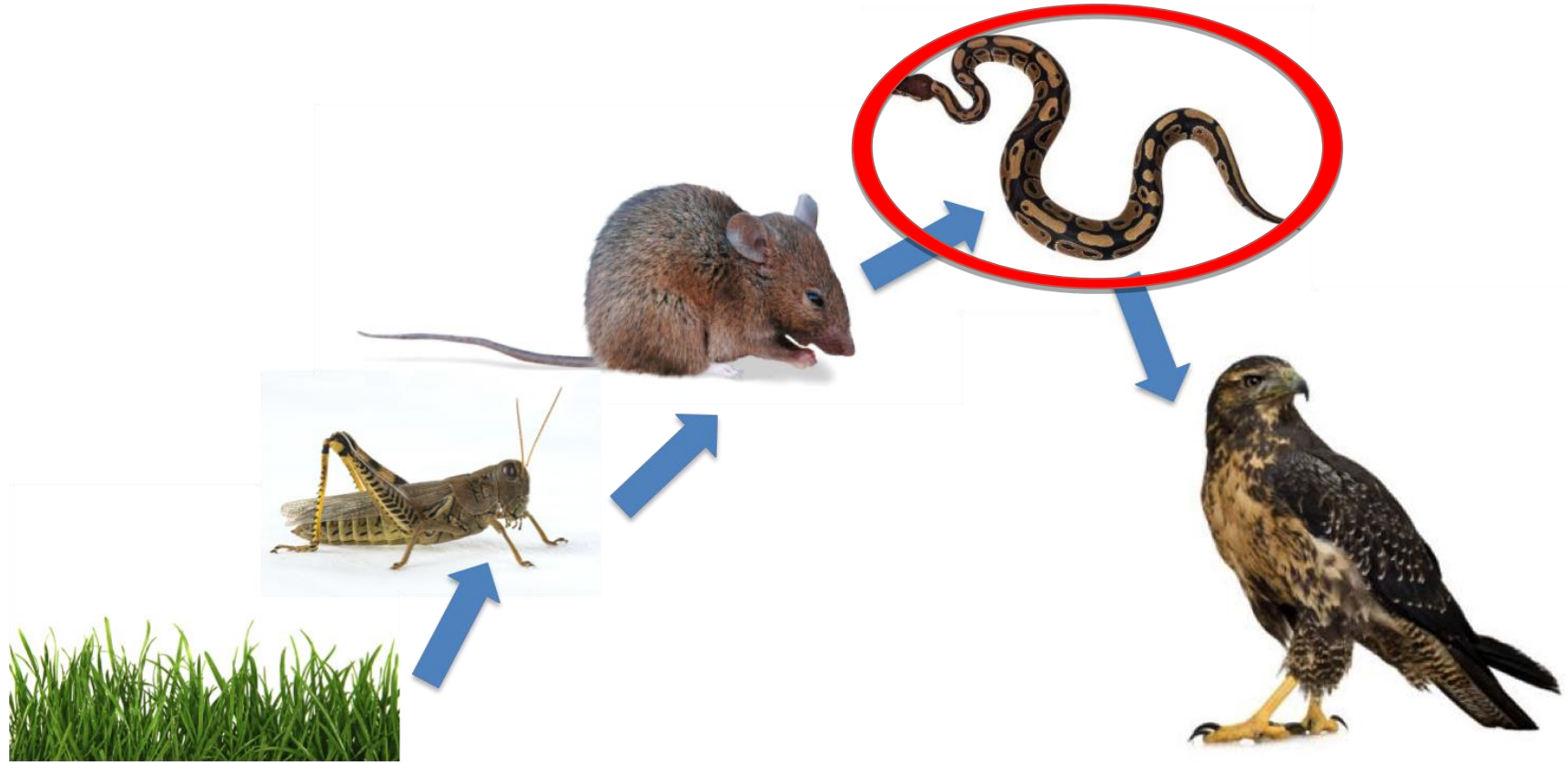
An animal that eats the producers.

Secondary Consumer



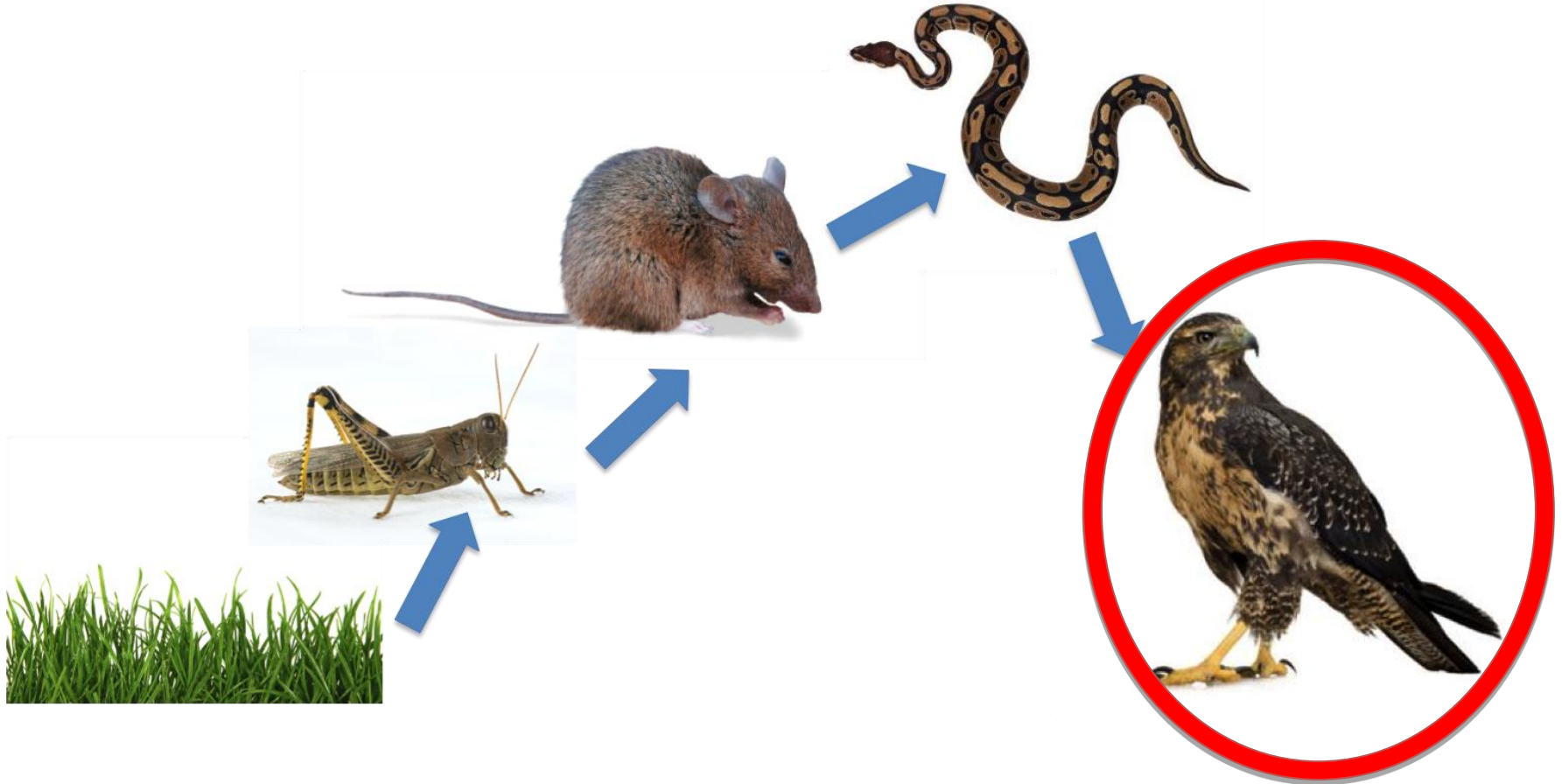
An animal that eats the primary consumers.

Tertiary Consumer



An animal that eats the secondary consumers.

Quaternary Consumer



An animal that eats the tertiary consumers.